

SECTION 3

CONTENTS

Organization Chart

The organizational chart for Mount Calvary is intended to represent both hierarchical and functional relationships.

- The staff positions are represented by the rectangles. Hierarchically, this chart depicts the relationship between the congregation and the staff, along with the reporting relationships between the staff members.
- Committees are represented by the ovals. Each committee is functionally linked to a staff position as their primary point of contact. These relationships are intended to be mutually supportive toward the achievement of common programmatic goals.
- Volunteer positions that are not necessarily within the committee structure are depicted by pentagons. These positions are also functionally linked to a staff person, who, in concert with the programmatic committee is responsible to lead and direct the activities of the volunteers who fill these roles.

Leadership Positions

This list contains all council members, committee chairpersons, and staff for the current church year. It also includes home and work telephone numbers.

Committee Positions

This list includes all council and committee members for the current church year. The year that the individual's term expires is also listed.

ORGANIZATION CHART

General

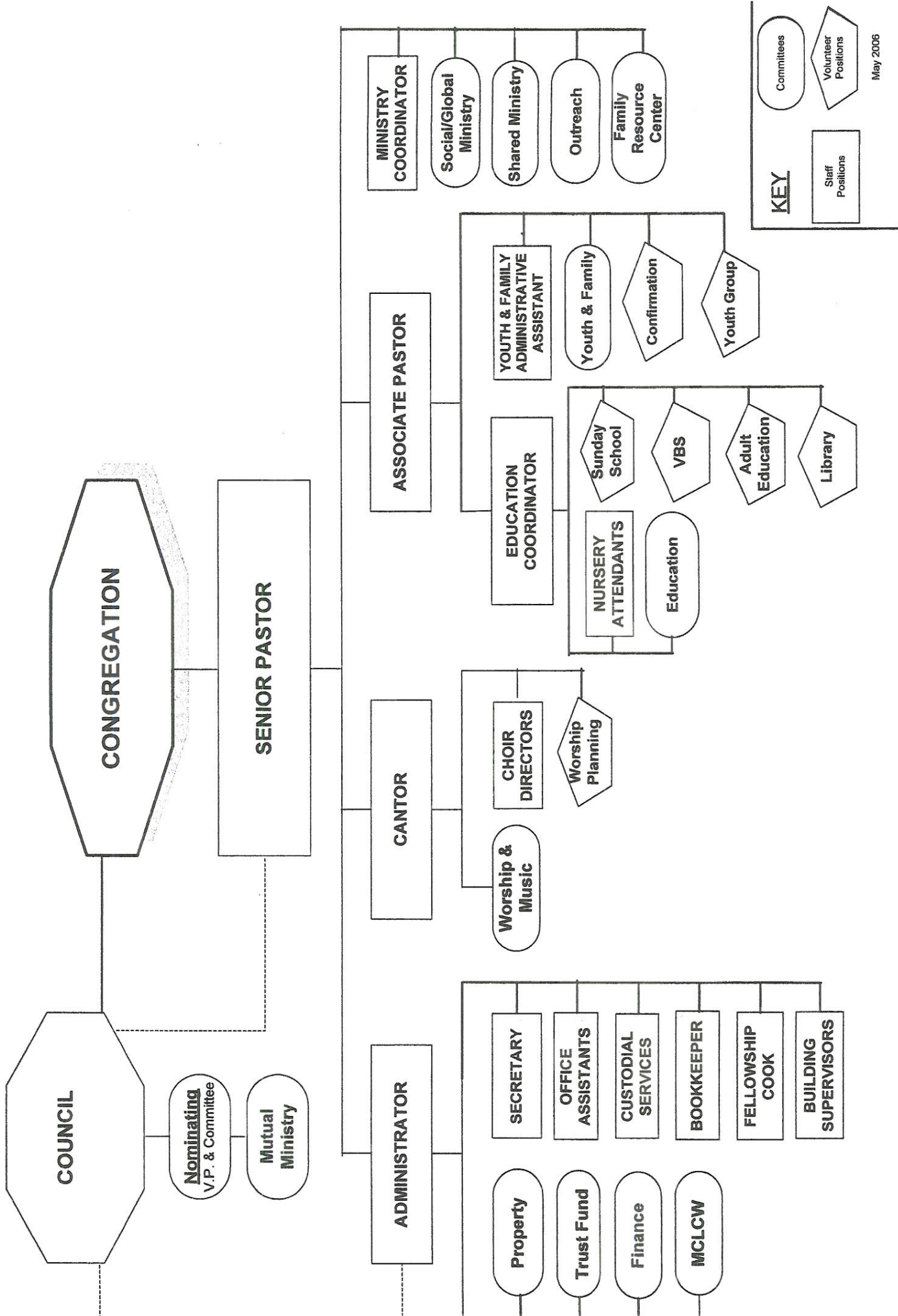
The organizational chart for Mount Calvary is intended to represent both hierarchical and functional relationships.

The staff positions are represented by the rectangles. Hierarchically, this chart depicts the relationship between the congregation and the staff, along with the reporting relationships between the staff members.

Committees are represented by the ovals. Each committee is functionally linked to a staff position as their primary point of contact. These relationships are intended to be mutually supportive toward the achievement of common programmatic goals.

Volunteer positions that are not necessarily within the committee structure are depicted by pentagons. These positions are also functionally linked to a staff person, who, in concert with the programmatic committee is responsible to lead and direct the activities of the volunteers who fill these roles.

MOUNT CALVARY LUTHERAN CHURCH ORGANIZATION CHART



**MOUNT CALVARY LUTHERAN CHURCH
2007-2008 LEADERSHIP POSITIONS**

NAME	POSITION	HOME PHONE	WORK PHONE
------	----------	------------	------------

COUNCIL			
Carol Hood	President	651-994-1671	612-664-8525
Corey Baisch	Vice President	651-456-5755	952-828-1574
Kelly Birkmaier	Treasurer	952-892-1786	
Hilary Laihinen	Council Secretary	651-688-2759	
Ruth Gempler	Council Member	651-890-4761	
Dan Gora	Council Member	612-385-7388	612-766-8244
Tammy McWain	Council Member	651-681-1897	
COMMITTEES			
Christine Codner	Education – Co-Chair	651-686-6297	651-405-2775
Becky Schumacher	Education – Co-Chair	651-688-0982	952-829-3500
Kelly Birkmaier	Finance – Chair	952-892-1786	
	Global/Social – Chair		
Darcy Schatz	MCFRC – Chair	651-687-0343	
	Outreach – Chair		
Eric Klimpke	Property – Chair	612-866-1702	
	Trust Fund - Chair		
David Manthey	Worship – Chair	651-365-8685	651-405-2482
Ann Jaede	Youth/Family – Chair	651-687-9456	
STAFF			
David Lillejord	Senior Pastor	651-460-3931	651-454-2344
Jennifer Rome	Associate Pastor	651-699-5839	651-454-2344
NaDyne Glidden	Church Administrator	651-688-6633	651-454-2344
Pam Carlson	Cantor	651-423-4135	651-454-2344
Jane Mollman	Education Coordinator	651-423-6943	651-454-2344
Margaret Stachour	Church Secretary	952-432-2563	651-454-2344

NAME	POSITION	HOME PHONE	WORK PHONE
	PART TIME/CONTRACT STAFF		
Wendy Bachman	Ministry Coordinator	651-454-1957	
Denise Beyer	Bookkeeper	952-736-2341	
Denise Beyer	Youth/Family Assistant	952-736-2341	
Marlys Peterson	Office Assistant	651-454-1946	
Kay Wandersee	Office Assistant	651-454-2950	
Joann Griffith	Nursery Attendant	952-233-1306	
Fang Yuam	Nursery Attendant	651-905-0286	
Doug Danielsen	Building Supervisor	651-322-7132	
Brian Jerzak	Building Supervisor	952-891-1770	
Linda Wagner	Fellowship Cook	651-454-8808	
Judy Forde	Praise Choir	651-452-1266	
Wendy Bachman	Joy Choir	651-454-1957	
Bonnie Tranby	Youth Bells	651-452-8337	
Mary Jane Pedersen	Alleluia Choir Accompanist	651-454-5567	
Alanna Teragawa	Calvary Carillons	612-819-5778	
Sarah Twedt	Sanctuary & Children's Choir Accompanist	651-688-0843	
Jim Hanson	Custodial Services	612-269-7653	

**MOUNT CALVARY LUTHERAN CHURCH
2007-2008 COMMITTEE POSITIONS**

NAME	POSITION	TERM EXPIRES
------	----------	--------------

COUNCIL		
Carol Hood	President	2008
Corey Baisch	Vice President	2009
Kelly Birkmaier	Treasurer	2008
Hilary Laihinen	Secretary	2008
Tammy McWain	Council Member	2009
Dan Gora	Council Member	2009
Ruth Gempler	Council Member	2008

EDUCATION		
Christine Codner	Co-Chairperson	2009
Becky Schumacher	Co-Chairperson	2009
Cindy Orth	Committee	2009
Carrie Nordstrom	Committee	2009
Julie Berthiaume	Committee	2008
Sally Brakke	Committee	2008
Jane Mollman	Staff	On-going

FAMILY RESOURCE CENTER		
Darcy Schatz	Chairperson	2009
Brenda Tollefson	Committee	2009
Kevin Codner	Committee	2008
Sharon Swenson	Committee	2008
Brenda Higgins	Committee	2008
Kristen Kraft	Committee	2009
Marilyn Hauser	Committee	2009
Pam Jex	Committee	2009
Chris Hallin	Committee	2009
Doug Hurd	Committee	2009
Ed Janke	Committee	2009

	FINANCE	
Kelly Birkmaier	Treasurer/Chairperson	2008
Gary Hanson	Committee	2009
Eric Baertsch	Committee	2009
Kathy Jents	Committee	2008
Jim Tjornhom	Committee	2009
Jason Forde	Committee	2008
Denise Beyer	Bookkeeper	On-going
NaDyne Glidden	Staff	On-going

	GLOBAL/SOCIAL MINISTRY	
	Chairperson	
Jason Piehl	Committee	2009
Cory Tranby	Committee	2009
Doug Dybsetter	Committee	2009
Lisa Johnson	Committee	2008
Craig Dowd	Committee	2008
Nancy Howard	Committee	2009
Stephanie Thoreson	Committee	2009
Dawn Struble	Committee	2008

	MUTUAL MINISTRY	
Appointed by Council	Committee	

	NOMINATING	
Corey Baisch	Vice President/Chair	2008

	OUTREACH	
	Chairperson	
Calvin Stoudt	Committee	2009
Sonja Stoudt	Committee	2009
LeAnne Hartmann	Committee	2008
Phil Heide	Committee	2008
Julie Cotch	Committee	2008
Darrell Cotch	Committee	2008
Debbie Nickell	Committee	2008
Liz Jaede	Committee	2009

	PROPERTY	
Eric Klimpke	Chairperson	2008
Jim Andert	Committee	2008
Mike McWain	Committee	2008
Dale Nicolay	Committee	2009
David Glad	Committee	2008
Nathan Reis	Committee	2009
Butch Le	Committee	2008
Bill Priebe	Committee	2009
Curtis Urban	Committee	2008
Adam Twedt	Committee (Y)	2008
David Kendall	Committee (Y)	2008
Craig Sanford	Committee (Y)	2008
Kevin Cotch	Committee (Y)	2008
Nick Dyson	Committee (Y)	2008
Lance Abrahamson	Committee	2008
NaDyne Glidden	Staff	On-going

	TRUST FUND	
	Chairperson	
Todd Peterson	Committee	2009
Steve Janky	Committee	2009
Dale Kuhl	Committee	2009
Jane Kuhl	Committee	2009
Kyle Hall	Committee	2008
Nicole Hall	Committee	2008

	WORSHIP	
David Manthey	Chairperson	2009
Gary Anderson	Committee	2008
Karen Abrahamson	Committee	2009
Jan Dare	Committee	2008
Karen Dare	Committee	2008
Lisa Anderson	Committee	2008
Sue Veum	Committee	2008
Amanda Elsen	Committee (Y)	2008
Melanie McMahan	Committee (Y)	2009
Dan Tollefson	Committee	2009
Hannah Johnson	Committee (Y)	2008
Pam Carlson	Staff	On-going

	YOUTH AND FAMILY	
Ann Jaede	Chairperson	2009
Rachel Peterson	Committee (Y)	2009
Ryan Arbuckle	Committee (Y)	2009
Ashley Le	Committee (Y)	2009
Eliza Hartmann	Committee (Y)	2009
Addison Dowd	Committee (Y)	2008
Megan Glidden	Committee (Y)	2008
Terri Thompson	Committee	2008
Tom Jaede	Committee (Y)	2008
Brittany Kruse	Committee (Y)	2008
Pastor Rome	Staff	On-going